

CAPSTONE AT ROYAL PALM

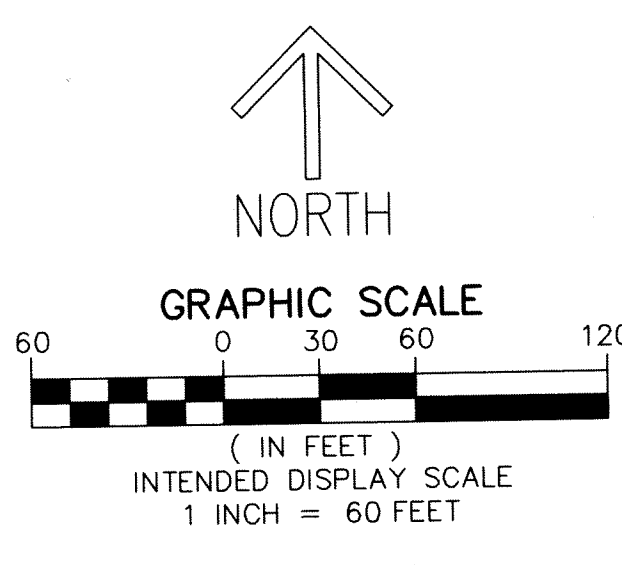
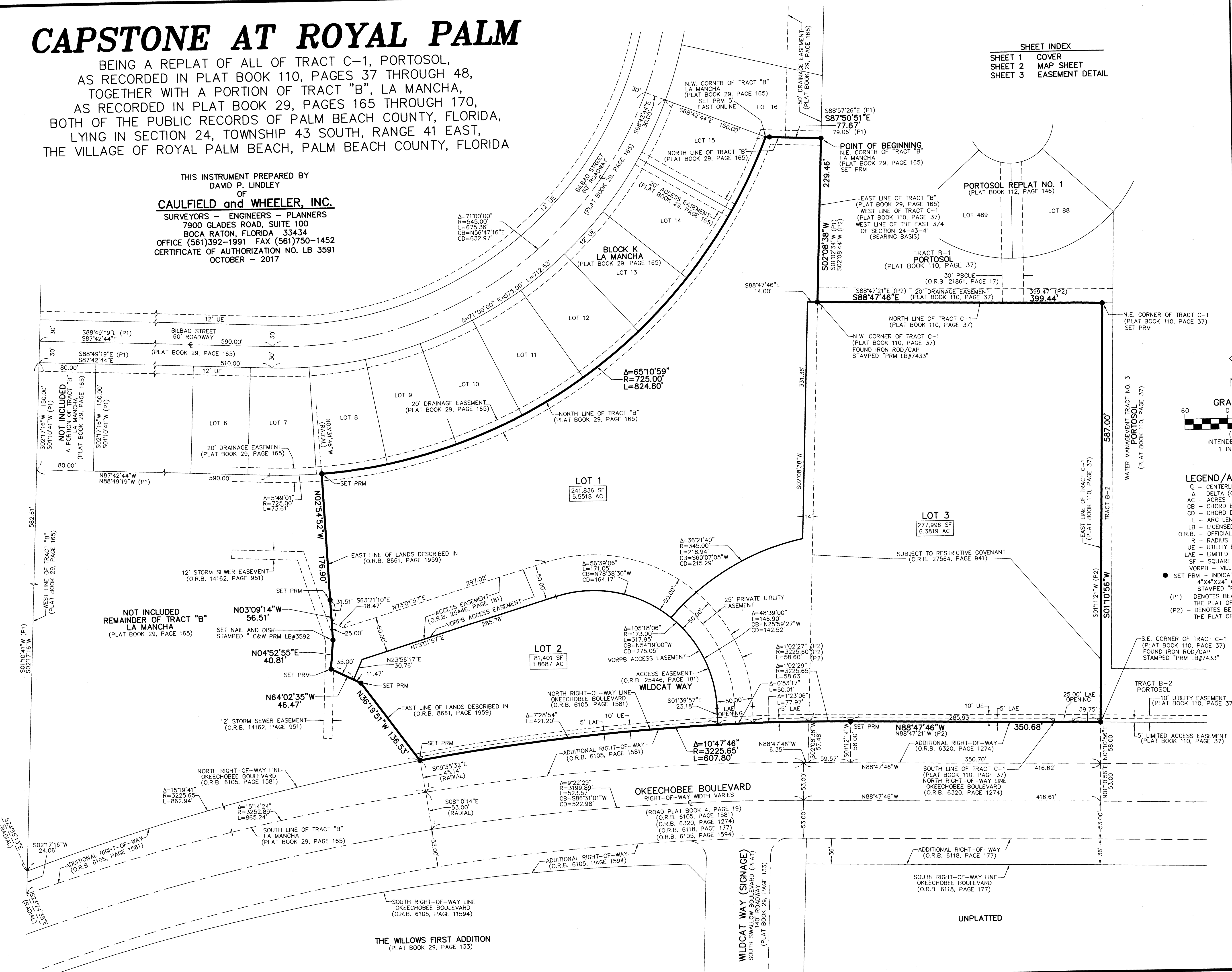
BEING A REPLAT OF ALL OF TRACT C-1, PORTOSOL,
AS RECORDED IN PLAT BOOK 110, PAGES 37 THROUGH 48,
TOGETHER WITH A PORTION OF TRACT "B", LA MANCHA,
AS RECORDED IN PLAT BOOK 29, PAGES 165 THROUGH 170,
BOTH OF THE PUBLIC RECORDS OF PALM BEACH COUNTY, FLORIDA,
LYING IN SECTION 24, TOWNSHIP 43 SOUTH, RANGE 41 EAST,
THE VILLAGE OF ROYAL PALM BEACH, PALM BEACH COUNTY, FLORIDA

THIS INSTRUMENT PREPARED BY
DAVID P. LINDLEY
OF
CAULFIELD and WHEELER, INC.
SURVEYORS - ENGINEERS - PLANNERS
7900 GLADES ROAD, SUITE 100
BOCA RATON, FLORIDA 33434
OFFICE (561)392-1991 FAX (561)750-1452
CERTIFICATE OF AUTHORIZATION NO. LB 3591
OCTOBER - 2017

SHEET INDEX	
SHEET 1	COVER
SHEET 2	MAP SHEET
SHEET 3	EASEMENT DETAIL

14

SHEET 2 OF 2



- LEGEND/ABBREVIATIONS**
- C - CENTERLINE
 - Δ - DELTA (CENTRAL ANGLE)
 - AC - ACRES
 - CB - CHORD BEARING
 - CD - CHORD DISTANCE
 - L - ARC LENGTH
 - LB - LICENSED BUSINESS
 - O.R.B. - OFFICIAL RECORD BOOK
 - R - RADIUS
 - UE - UTILITY EASEMENT
 - LAE - LIMITED ACCESS EASEMENT
 - SF - SQUARE FEET
 - VORPB - VILLAGE OF ROYAL PALM BEACH
 - SET PRM - INDICATES SET PERMANENT REFERENCE MONUMENT
 - 4"x4"x24" CONCRETE MONUMENT WITH DISK STAMPED "PRM LB#3591", UNLESS OTHERWISE NOTED
 - (P1) - DENOTES BEARING AND DISTANCE AS SHOWN ON THE PLAT OF LA MANCHA
 - (P2) - DENOTES BEARING AND DISTANCE AS SHOWN ON THE PLAT OF PORTOSOL

THE WILLOWS FIRST ADDITION
(PLAT BOOK 29, PAGE 133)

UNPLATTED